

Composting



Lisa Finn Bsc
An Taisce

Why compost?

- **Saves money**
- **Reduces Waste to landfill**
- **Composting helps the environment**
- **Protects our Bogs**



We are producing over twice as much household and commercial waste as we did 10 years ago

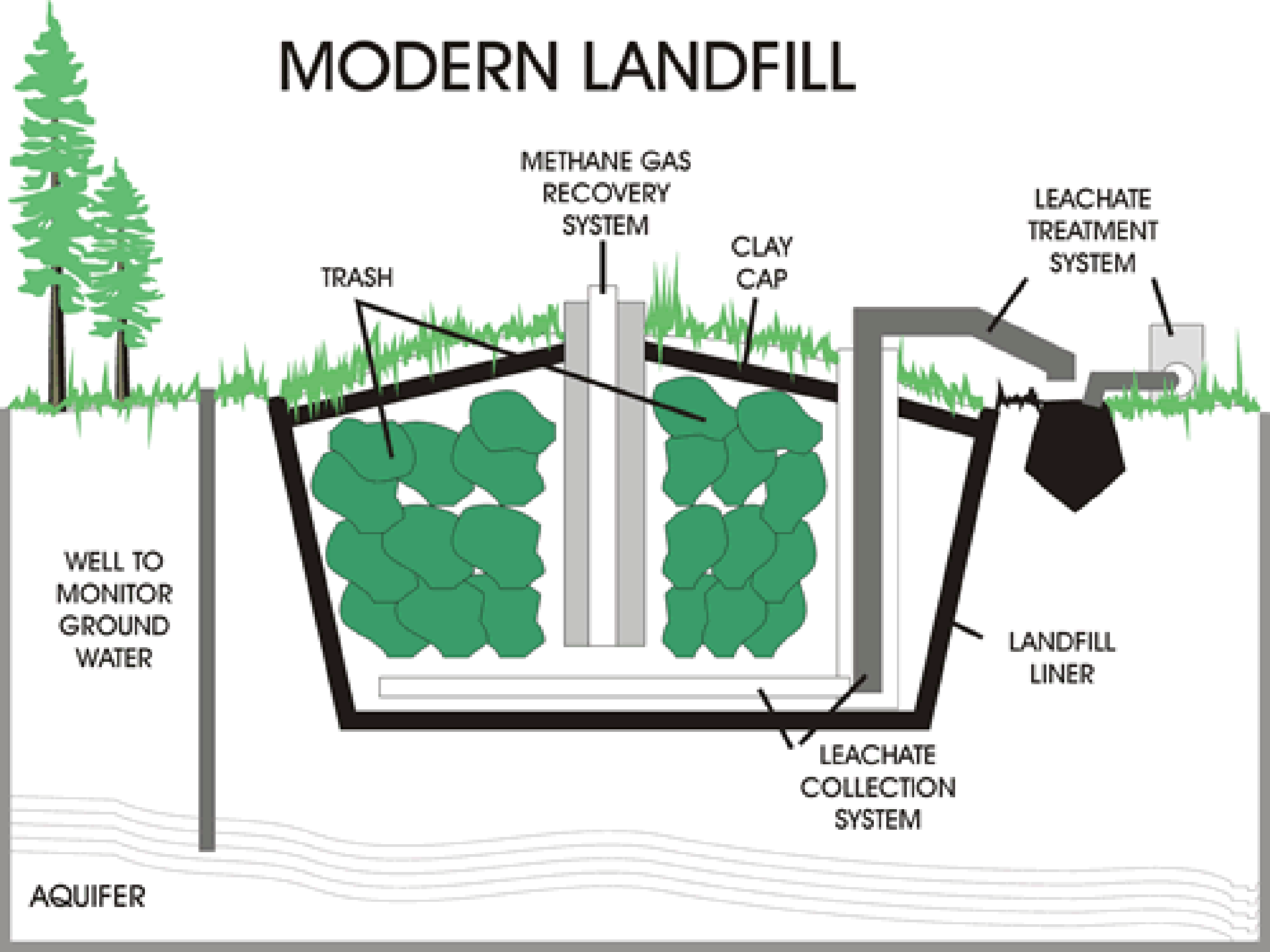


Targets



- Diversion of 50% of overall household waste away from landfill,
- A minimum 65% reduction in biodegradable wastes consigned to landfill,
- The development of waste recovery facilities employing environmentally beneficial technologies (including composting)
- An 80% reduction in methane emissions from landfill

MODERN LANDFILL

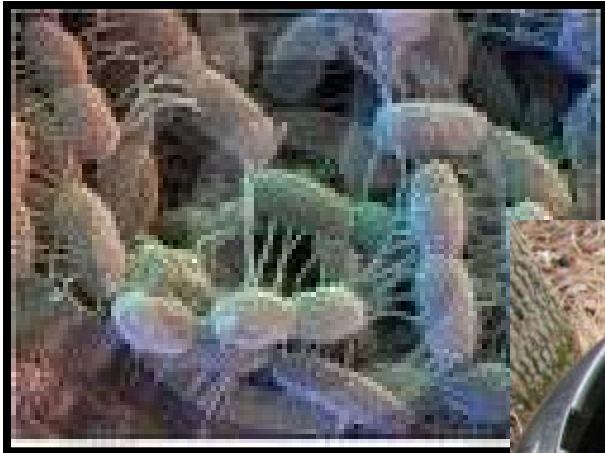


Benefits

Compost can be used for

- Making healthy soil
- Plant pots
- Lawn feed
- Mulching







Compost Bins - Getting Started

- Choose a good site
- Choose a compost container
- Twiggy Base
- Good mix of materials



What can be composted?

All RAW materials

- Kitchen waste
- Garden waste
- Paper waste
- Animal waste
(vegetarian only e.g. rabbit)



Sort your Rubbish Out!

GREEN

for wet compostables

- Food items (scraps, peels, bones, shells, etc.)
- Paper towels and tissues
- Tea bags, coffee filters and coffee grounds
- Diapers and sanitary products
- Household plants
- Animal waste and litter

BLUE

for dry recyclables

- Aluminum
- Boxboard
- Cardboard (flattened)
- Glass (all colours)
- Newsprint and paper
- Plastic containers (all #s)
- Polycoat
- Steel
- Styrofoam (large pieces)

CLEAR

for landfill

Items that are:

- NOT recyclable (DRY)
- NOT compostable (WET)
- NOT hazardous
- and can't be donated

Before you toss, think of the loss. Let's not waste valuable resources.

Activators are...

- Freshly cut nettles
- Comfrey leaves
- Poultry manure
- Grass cuttings
- Seaweed
- Farmyard manure
- H.L.A.



What's Important?

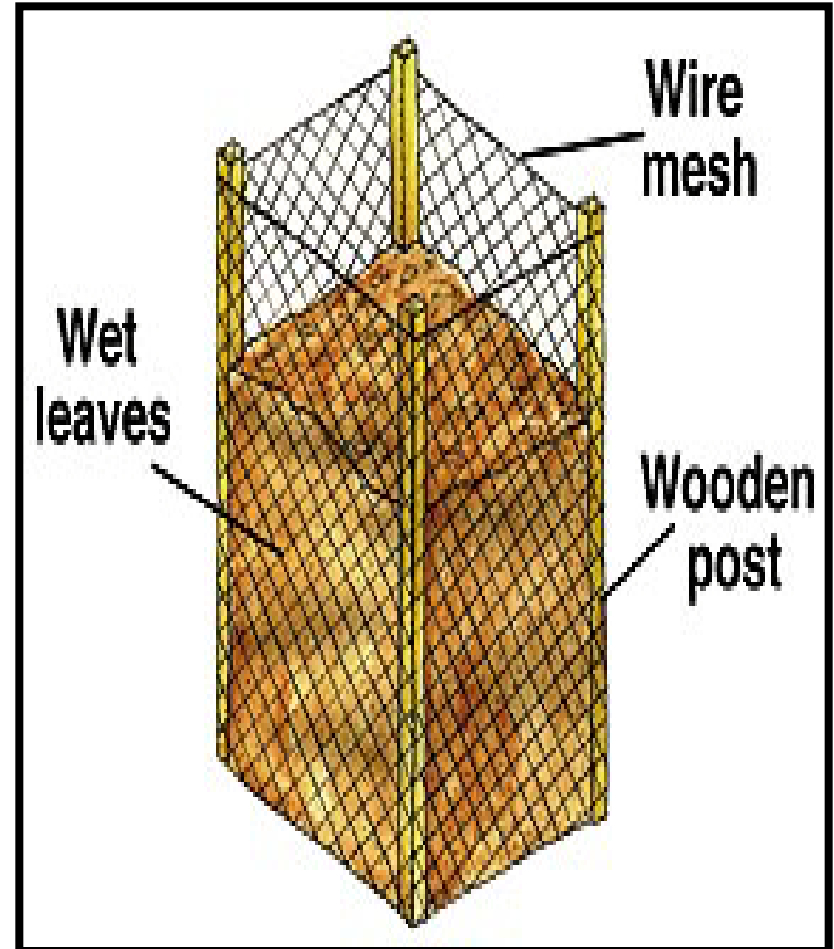
- Choose a system that suits you best
- Easy access /location
- Mix of materials/Balance
- A.H.A.
- Visit regularly
- Process takes time
- Don't Give Up!!
- Remember: even if you don't get compost on your first try, you are still sending less waste to landfill!



Trouble-shooting

- Rotten egg odour - not enough air / meat
- Strong unpleasant smell /slimy- too much grass
- Fruit flies - layer of damp newspaper / soil over new material / leave cover open in summer months
- Egg-shells - oven!
- Vermin - lavender/open space/no meat or fish/loose drawer/on uneven ground / glass beads
- Too Slow - shred and aerate -add activator

Making a Leaf Mould



Wormery



Useful Websites

www.

- ipcc.ie
- greenschoolsireland.com
- raceagainstwaste.com
- enfo.ie
- cre.ie

Wormeries

www.

- growgreensolutions.com
- wigglywiggers.co.uk
- elementgreen.com
- wormsexpressireland.com